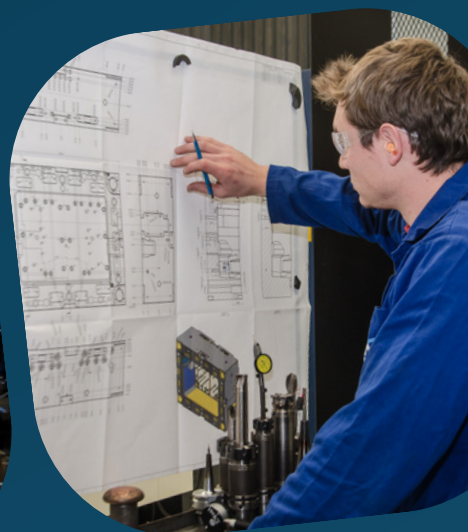
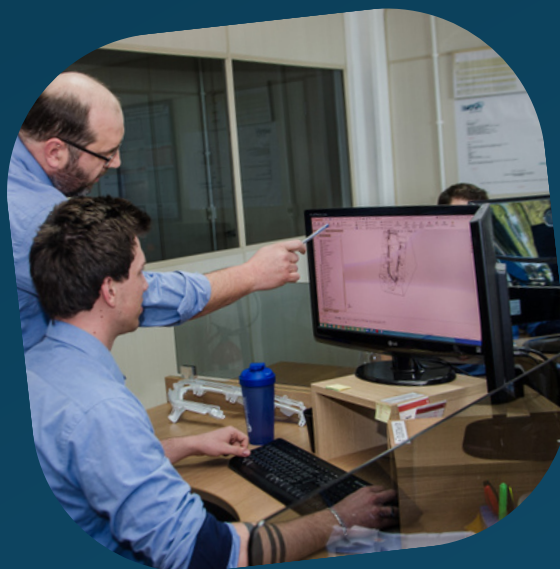
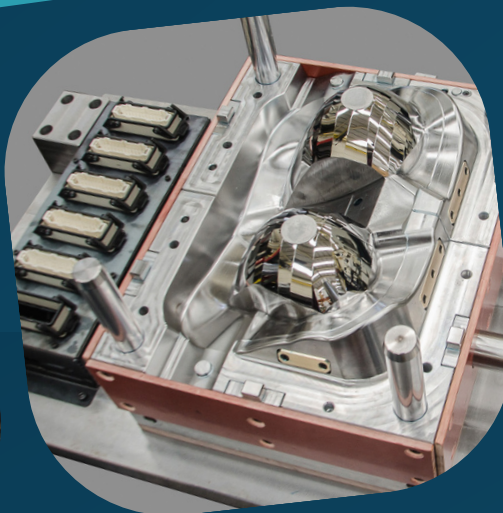


iNOVA

MATRIZES



(54) 3027-3901 . (54) 9 9610-1402
comercial@inovamatrizes.com.br
AV. Capivari,407 - Bairro São Ciró
95059-100 - Caxias do Sul/RS

www.inovamatrizes.com.br



WELCOME

COMPANY



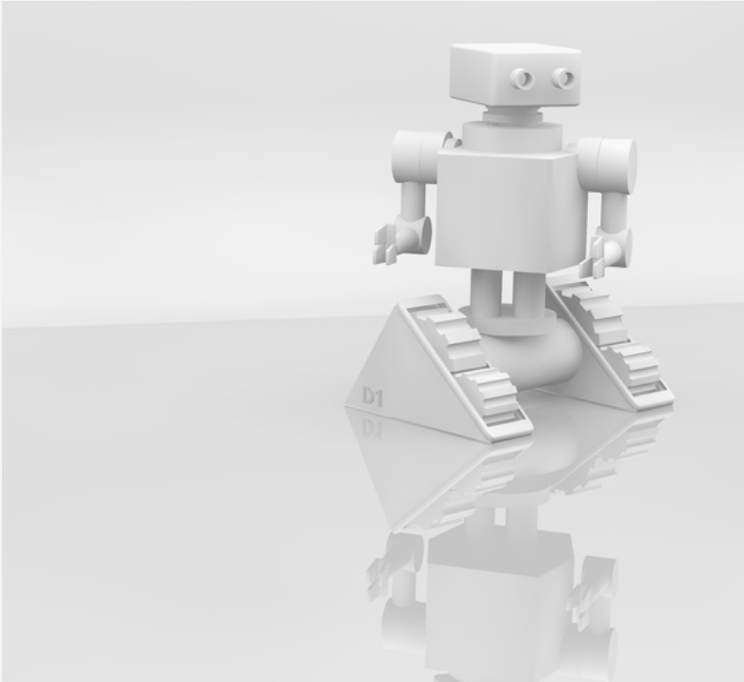
INOVA MATRIZES was founded 20 years ago in Caxias do Sul (RS) as a business to make injection and die-cast moulds.

Its ideas, dedication, quality, and continuous growth allowed the Company to make its mark over time both nationally in Brazil and South America Area.

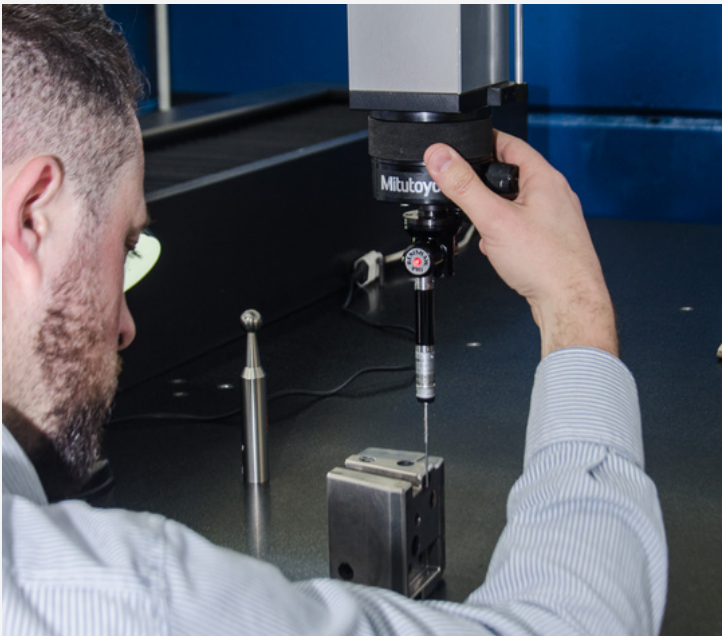
It is a direct supplier to prestigious Tier 1 Clients, who are direct suppliers to the leading automobile manufacturers around the Brazil.

Today, INOVA MATRIZES is a business with a staff of 50 people and our current focus is on medium and large-size injection moulds for the Automotive sector, as well as multi-component moulds in general.

QUALITY



Quality is an essential value that INOVA MATRIZES has pursued since the beginning, with earnestness and professionalism. Today, INOVA MATRIZES continues to paying the same particular attention to Quality Control. This is applied constantly to the processes and the product throughout all manufacturing phases, both internal and external, and on completion of manufacture, all in compliance with the strict ISO 9001:2015 Standards



"WITH THE IMPLEMENTATION OF THIS ISO STANDARD, INOVA EXPANDED THE SEARCH FOR THE TOTAL QUALITY OF ITS PROCESSES"



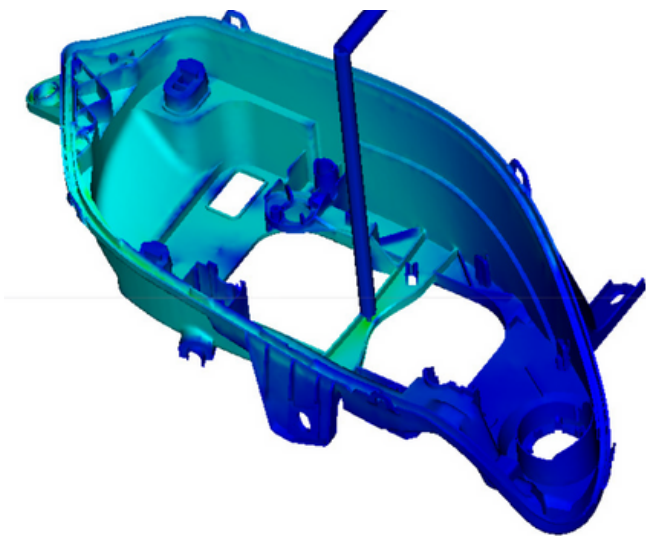
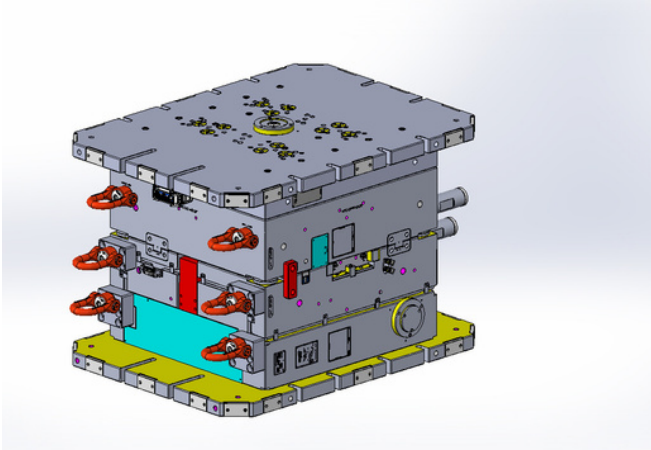
OUR PROCESSES:

CAD

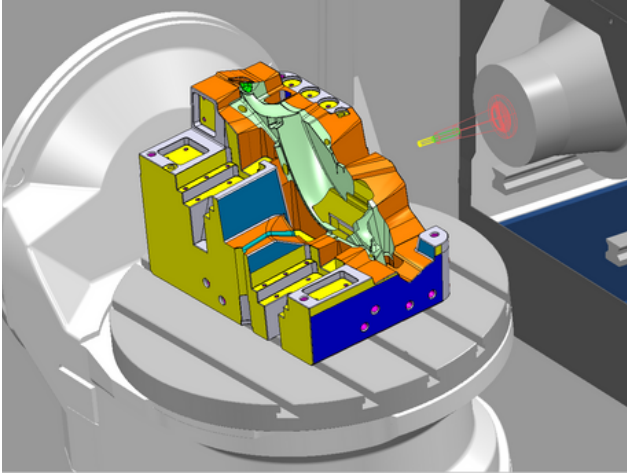
Computer aided design is a 2D and 3D assisted design software, molding extremely complex objects and modifying surfaces.

CAE

Computer Aided Engineering, simulation and design software and performance analysis of product molding processes in a finite element analysis, using extensive databases and analysis techniques, provides tools for cost estimation and product optimization, allowing demonstrate characteristics of material, finish, manufacturing process and even simulations of external influences such as forces applied to the system, temperature, among others.



OUR PROCESSES:



CAM

Computer Aided Manufacturing serves to create or code for numerical control (CNC) machines, which can be real components that can cause from a digital CAD model as an exact copy.



MACHINING

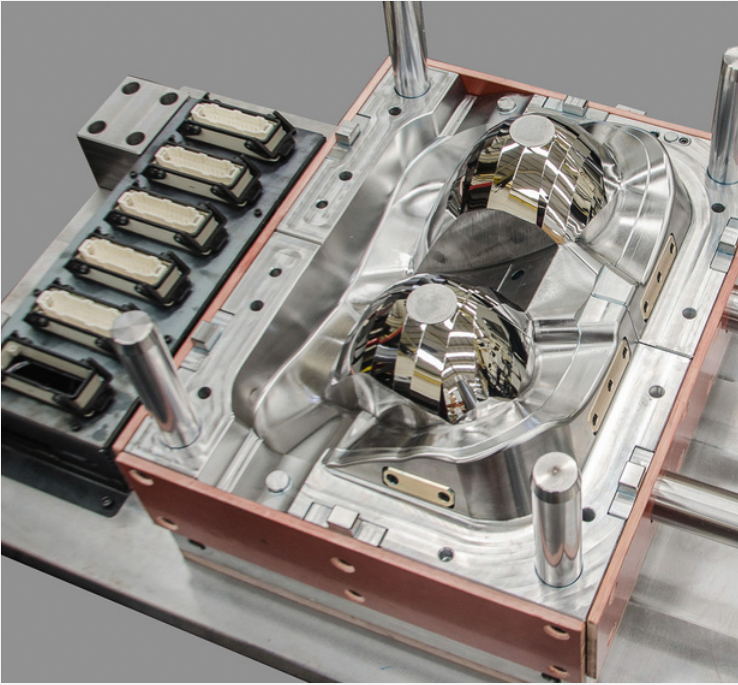
Finishing and precision operations on machines with up to 05 axes and to erosion and deep drilling.



ASSEMBLY AND FINISHING

We have qualified labor with extensive experience, where the steps take place internally, we have adjustment presses where the kinematics occurs.

SOLUTIONS



20 years designing and manufacturing molds for injection molding and die-casting.

Experience in the production of different types of molds for the markets:

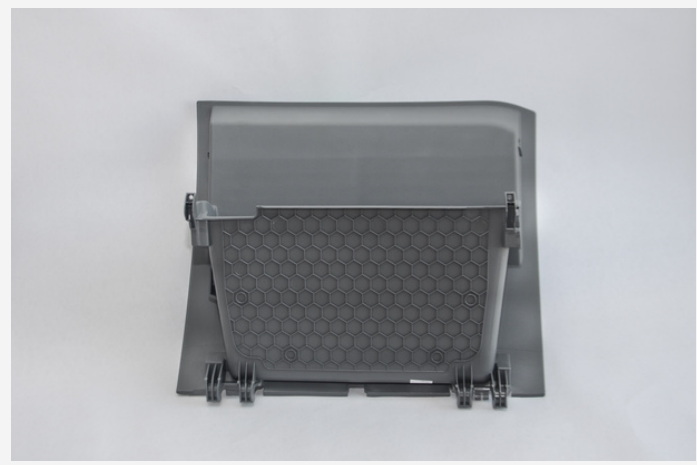
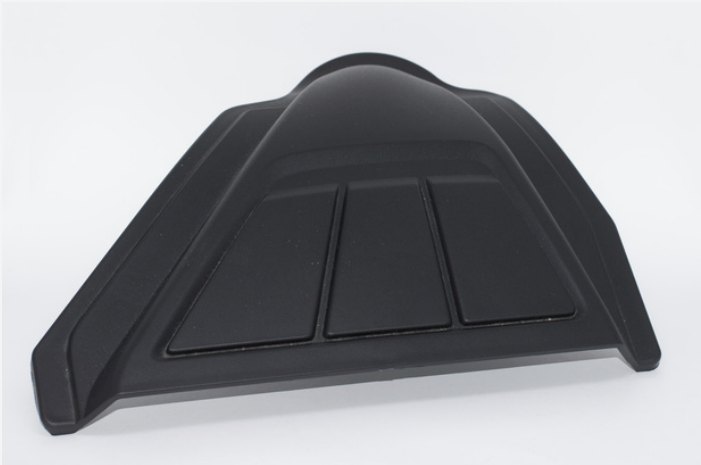
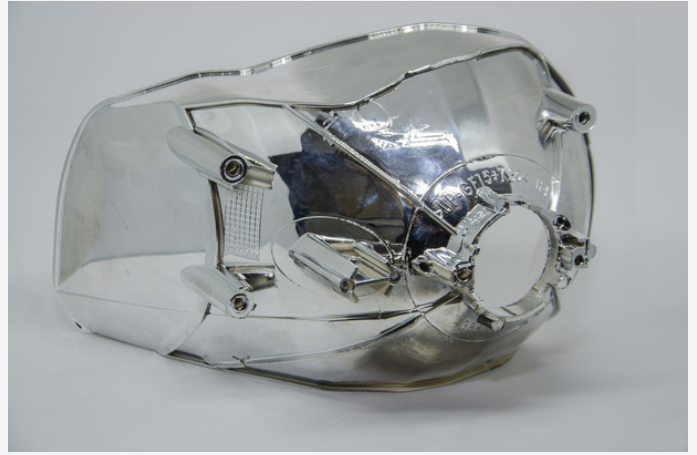
- Automotive,
- Packaging
- White line
- Electronics Industry,
- Agriculture,
- Construction,
- Thin-walled



SOME WORKS



SOME WORKS



SOME WORKS



MAIN EQUIPMENT

EROSION ELECTRO EDM 900

600mm x 480mm x 260mm

EROSION ELECTRO CNC SPI

320mm x 250mm x 250mm

EROSION ELECTRO EDM 840

530mm x 350mm x 250mm

EROSION ELECTRO EDM 1270 CNC

1400mm x 700mm x 500mm

EROSION ELECTRO A 1 IA

520mm x 370mm x 400mm

DEEP DRILLING DP 1200

1300mm x 1000mm x 1200mm

MILLING MACHINE FTV3

970mm x 450mm x 500mm

MAIN EQUIPMENT

MANDRILLER FTV3

1270mm x 1400mm x 900mm

MACHINE CENTER HCM 1100

1100mm x 700mm x 500mm

MACHINE CENTER FV 1000SE

1050mm x 500mm x 550mm

MACHINE CENTER FV 1300SE

1350mm x 610mm x 560mm

MACHINE CENTER LG 1000

1000mm x 550mm x 550mm

MACHINE CENTER VM 40

1000mm x 500mm x 550mm

MACHINE CENTER FV 760

760mm x 500mm x 550mm

MAIN EQUIPMENT

MACHINE CENTER LG 1370

1300mm x 700mm x 600mm

MACHINE CENTER HEP 2150

2060mm x 1560mm x 780mm

MACHINE CENTER 5 AXES G350

600mm x 750mm x 805mm

MACHINE CENTER TGV

1600mm x 1200mm x 700mm

MACHINE CENTER 5 AXES S.F.Y HA

600mm x 400mm x 400mm

LATHE ND 250

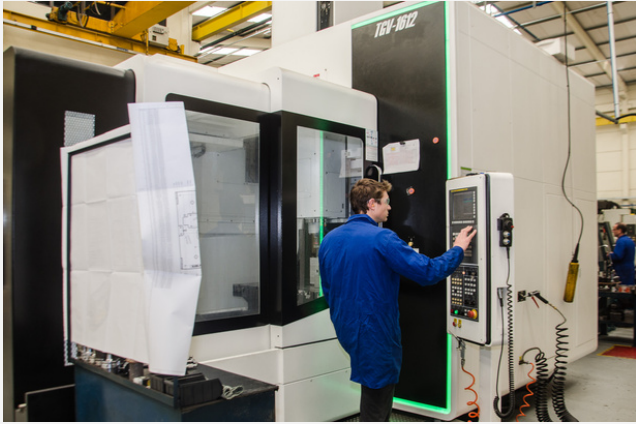
550mm x 1500mm

OVERHEAD CRANE

For 06 Ton. e 12,5 Ton

THREE-DIMENSIONAL MITUTOYO

integrated software PowerInspect



OUR CONTACTS:

+55 54 3027.3901 - +55 54 9 9610.1402

BUSINESS:

paulo@inovamatrizes.com.br

comercial@inovamatrizes.com.br

TEAM OF DEVELOPMENT AND TECHNOLOGY:

michel@inovamatrizes.com.br

projetos.molon@inovamatrizes.com.br

LOCATION:

